

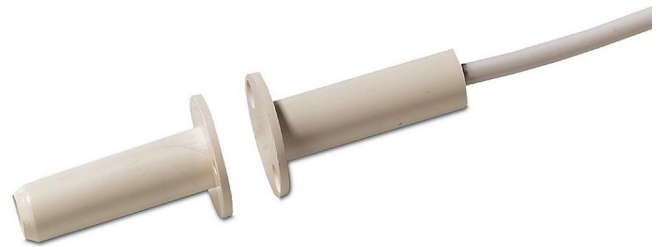
DC106

Inbouwcontact met grote flens, met sabotagelus, 2m, wit, afstand ± 12 mm, NC

The DC106 recessed contacts are designed for applications where the added integrity of mounting screws is needed. The units can be used in wooden and metal frame doors and windows.

Easy Installation

The two mounting holes provide additional strength to prevent the contact and magnet from becoming dislodged due to environmental changes. This can occur when the door or window frames become warped and misaligned from moisture or the settling of a building.



Details

- Flange mounting for positive mounting
- Attractive, added security of recessed installation
- Easy installation
- Standard 2.5 m wire length
- Tamper loop provided
- Built-in resistors available to special order

DC106

Inbouwcontact met grote flens, met sabotagelus, 2m, wit, afstand ± 12 mm, NC

Technische specificaties

General

Application type	Recessed Mount
Contact type	NC
Connectivity	4 wires, 2.5 m
Mounting screws	Supplied

Wired/wireless

Wired-wireless	Wired
----------------	-------

Physical

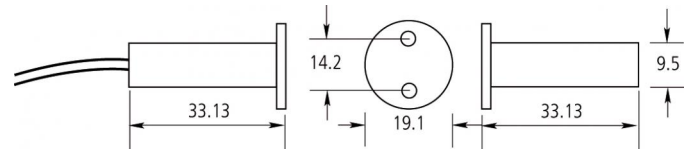
Physical dimensions	19 x 33 mm
Colour	White
Diameter	9.5 mm
Borehole diameter	9.5 mm
Dimensions magnet	19 x 33 mm
Operating gap	23 mm

Environmental

Operating temperature	-40 to +65°C
-----------------------	--------------

Standards & regulation

EN50131 grade	Grade 2
---------------	---------



As a company of innovation, UTC Fire & Security reserves the right to change product specifications without notice. For the latest product specifications, visit UTC Fire & Security online or contact your sales representative.

4 March 2019 - 15:18