

Description

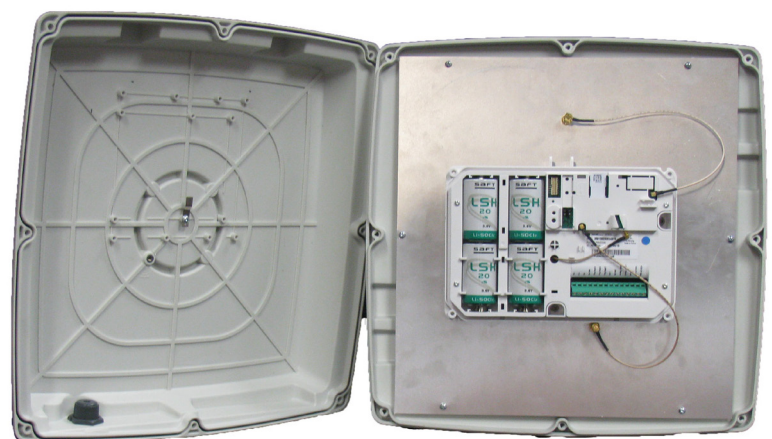
The XTO control panel is a weatherproof, wireless, battery operated hybrid alarm system. It is designed for outdoor commercial applications (constructions sites, cellular towers, remote sites, substations...).

XTO comes in an IP65 waterproof housing with mounting bracket. The panel will operate on batteries between -20F to +140F. It has two integrated longrange antennas: one for 915MHz communications between the panel and peripheral devices AND one for GSM communications from the panel to the Central Station.

Supervised Wireless Technology

The XTO, along with all Videofied devices utilize patented S2View® - Spread Spectrum, Videofied, Interactive, AES Encrypted Wireless technology, providing optimum signal integrity and security. Bi-directional RF communication paths between all system devices and the system control panel assure high signal reliability. Integrated antennas eliminate protruding wires or rods cumbersome to install and unsightly to consumers, and if damaged could lead to potential system communication problems.

The panel supervises every device (excluding the remote keyfob) to validate current open/close state, tamper condition, serial number, date of manufacture, firmware revision, and battery status.



Electrical Data

Power requirements	Four 3.6 V Lithium batteries
Battery type	Lithium, LSH20
Battery life (estimated)	Up to 4 years
RF technology	S ² View®
Radio type	Spread Spectrum Bidirectional
Operating frequency	915 MHz. (US), 920 MHz (AUS) 868 MHz (EU) 25 frequencies
Transmission security	AES encryption algorithm
Supervision	Panel polls devices every 8 minutes
Antennas	Integrated
Tamper detection	Cover tampered on Enclosure
Operating temperature	-20°/+140° F (-30°/+60° C)
Maximum relative humidity	95 %, non-condensing
UL listings	1023 (applied for)
Programmable wired inputs	3
Arming wired inputs	2
Dry contact option	Yes
Input voltage	12 VDC (15V max)
Input current	2 mA max
Programmable wired inputs	3
Dry contact	Yes
Input voltage	12 VDC (15V max)
Programming	Alphanumeric Keypads or Frontel Installer Software
Devices per system	25 per system
Access codes	19 maximum
Security levels	3
Arming modes (Default, SP1, SP2)	3
Areas	4 (area 1 predefined from factory entry/exit delayed. Areas 2,3 & 4 programmable)
Communication formats	GPRS only
Protocols	Frontel only
Installer codes	One (for system programming only)

Communicator type	GPRS and GSM cell
IP stack	IP, TCP/IP
Remote maintenance	Frontel Installer Protocol only
Video transmission	By Frontel protocol to Central Monitoring Station
Video format	MPEG video file
Video file size (Avg.)	220 Kbytes
Video framing	5 frames/second
Image format	JPEG
Image resolution	320 x 240 pixels
History/event log - No video saved	4,000 stored events

Physical Data

Material	ABS-ULV0
Dimensions	(LxWxD): 15.4" x 15.4" x 3"

Installation/Mounting

Weatherproof Housing	4 screws on mount to back of housing, 1 to 1 1/2" pole mounts
----------------------	--

EMEA SALES

23, avenue du Général Leclerc
92340 BOURG-LA-REINE
FRANCE
E-Mail : emeasales@rsivideotech.com

North American Headquarters

4455 White Bear Parkway, Suite 700
White Bear Lake, MN 55110
USA
E-Mail : usasales@rsivideotech.com



www.videofied.com