

**Mini 1U Series Standalone DVR**  
**Quick Start Guide**

# Table of Contents

<b>1</b>	<b>OVERVIEW CONTROLS.....</b>	<b>7</b>
1.1	Front Panel.....	7
1.2	Rear Panel.....	8
1.3	Connection Sample.....	9
<b>2</b>	<b>INSTALLATION AND CONNECTIONS.....</b>	<b>11</b>
2.1	Check Unpacked DVR.....	11
2.2	About Front Panel and Real Panel .....	11
2.3	HDD Installation.....	11
<b>3</b>	<b>OVERVIEW OF NAVIGATION AND CONTROLS .....</b>	<b>13</b>
3.1	<b>Login, Logout &amp; Main Menu .....</b>	<b>13</b>
3.1.1	Login .....	13
3.1.2	Main Menu .....	13
3.1.3	Logout.....	14
3.1.4	Auto Resume after Power Failure .....	14
3.1.5	Replace Button Battery .....	14
3.1.6	Preview Zoom Function .....	15
3.2	<b>Live Viewing .....</b>	<b>15</b>
3.3	<b>Schedule .....</b>	<b>15</b>
3.4	<b>Manual record .....</b>	<b>16</b>

<b>3.5</b>	<b>Encode</b> .....	<b>17</b>
3.5.1	Snapshot .....	18
3.5.2	Image FTP .....	19
<b>3.6</b>	<b>Search &amp; Playback</b> .....	<b>20</b>
<b>3.7</b>	<b>Network</b> .....	<b>24</b>
<b>3.8</b>	<b>Pan/Tilt/Zoom</b> .....	<b>25</b>
3.8.1	PTZ Setup .....	25
3.8.2	PTZ Operation .....	26
3.8.3	3D Intelligent Positioning Key .....	27
<b>4</b>	<b>WEB OPERATION</b> .....	<b>28</b>
4.1	Network Connection .....	28
4.2	Login .....	28
4.3	Main Window .....	30
	<b>APPENDIX H TOXIC OR HAZARDOUS MATERIALS OR ELEMENTS</b> .....	<b>31</b>

## **Welcome**

Thank you for purchasing our DVR!

This user's manual is designed to be a reference tool for the installation and operation of your system.

Here you can find information about this series DVR features and functions, as well as a detailed menu tree.

Before installation and operation please read the following safeguards and warnings carefully!



# Important Safeguards and Warnings

## 1 . Electrical safety

All installation and operation here should conform to your local electrical safety codes. We assume no liability or responsibility for all the fires or electrical shock caused by improper handling or installation.

## 2 . Transportation security

Heavy stress, violent vibration or water splash are not allowed during transportation, storage and installation.

## 3 . Installation

Keep upwards. Handle with care.

Do not apply power to the DVR before completing installation.

Do not place objects on the DVR

## 4 . Qualified engineers needed

All the examination and repair work should be done by the qualified service engineers.

We are not liable for any problems caused by unauthorized modifications or attempted repair.

## 5 . Environment

The DVR should be installed in a cool, dry place away from direct sunlight, inflammable, explosive substances and etc.

This series product shall be transported, storage and used in the environment ranging from 0°C to 40 °C

## 6. Accessories

Be sure to use all the accessories recommended by manufacturer.

Before installation, please open the package and check all the components are included.

Contact your local retailer ASAP if something is broken in your package.

## 7. Lithium battery

Improper battery use may result in fire, explosion, or personal injury!

When replace the battery, please make sure you are using the same model!

# 1 Overview Controls

This section provides information about front panel and rear panel. When you install this series DVR for the first time, please refer to this part first.

## 1.1 Front Panel

The front panel is shown as bellow.

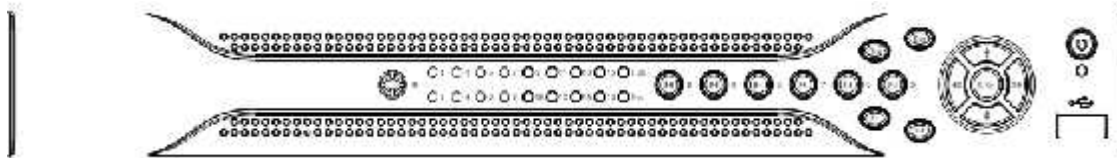



Figure 1-1 Front Panel

Please refer to the following sheet for front panel button information.

Name	Icon	Function
Power button		Power button, press this button for three seconds to boot up or shut down DVR.
Shift	Shift	In textbox, click this button to switch between numeral, English(Small/Capitalized),donation and etc.
Up/1 Down/4		Activate current control, modify setup, and then move up and down.
		Increase/decrease numeral.
		Assistant function such as PTZ menu.
		In text mode, input number 1/4 (English character G/H/I)
Left/2 Right/3		Shift current activated control,
		When playback, click these buttons to control playback bar. In text mode, input number 2(English character A/B/C) /3(English character D/E/F)
ESC	ESC	Go to previous menu, or cancel current operation.
		When playback, click it to restore real-time monitor mode.
Enter	ENTER	Confirm current operation
		Go to default button
		Go to menu
Record	REC	Manually stop/start recording, working with direction keys or numeral keys to select the recording channel.
Slow play/8		Multiple slow play speeds or normal playback. In text mode, input number 8 (English character T/U/V).
Assistant	Fn	One-window monitor mode, click this button to display assistant function: PTZ control and image color.

		<p>Backspace function: in numeral control or text control, press it for 1.5seconds to delete the previous character before the cursor.</p> <p>In motion detection setup, working with Fn and direction keys to realize setup.</p> <p>In text mode, click it to switch between numeral, English character(small/capitalized) and etc.</p> <p>Realize other special functions.</p>
Fast play/7	▶▶	<p>Various fast speeds and normal playback. In text mode, input number 7 (English character P/Q/R/S).</p>
Play previous/0	◀	<p>In playback mode, playback the previous video In text mode, input number 0.</p>
Reverse/Pause/6	◀	<p>In normal playback or pause mode, click this button to reverse playback In reverse playback, click this button to pause playback. In text mode, input number 6 (English character M/N/O)</p>
Play Next/9	▶	<p>In playback mode, playback the next video In menu setup, go to down ward of the dropdown list. In text mode, input number 9 (English character W/X/Y/Z)</p>
Play/Pause /5	▶	<p>In normal playback click this button to pause playback In pause mode, click this button to resume playback. In text mode, input number 5(English character J/K/L).</p>
USB port		To connect USB storage device, USB mouse.
Network abnormal indication light	Net	Network error occurs or there is no network connection, the light becomes red to alert you.
HDD abnormal indication light	HDD	HDD error occurs or HDD capacity is below specified threshold value, the light becomes red to alert you.
Record light	1-16	System is recording or not. It becomes on when system is recording.
IR Receiver	IR	It is to receive the signal from the remote control.
Alarm indication light	Alarm	Here you can view there is external alarm input or not. The light becomes on when there is an external alarm. The light become off when the external alarm stops.

## 1.2 Rear Panel

Mini 1U series product rear panels are shown as below..

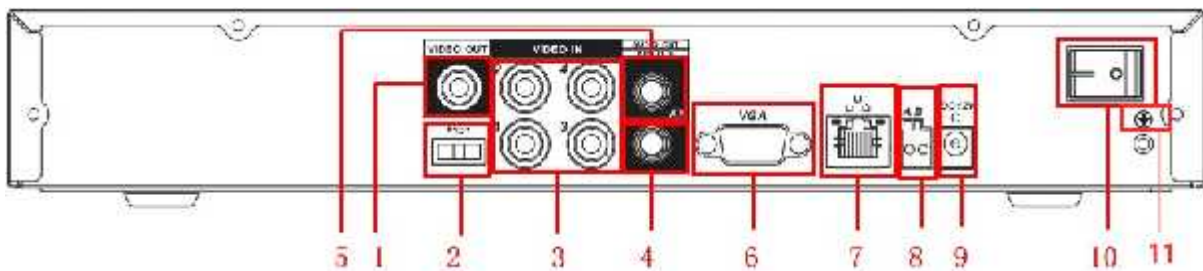


Figure 1-2 4-channel

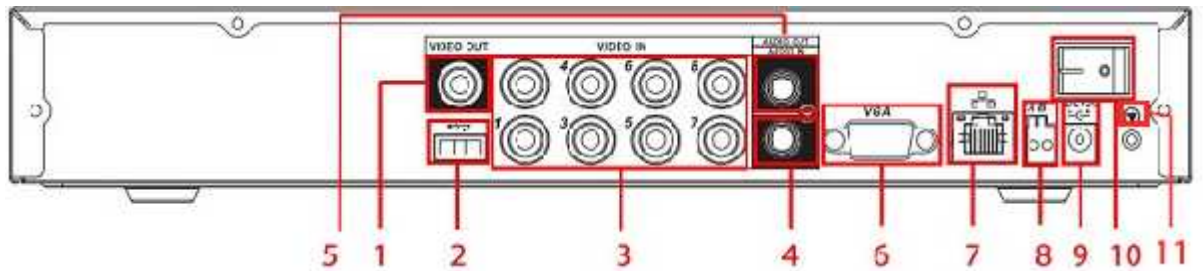


Figure 1-3 8-channel

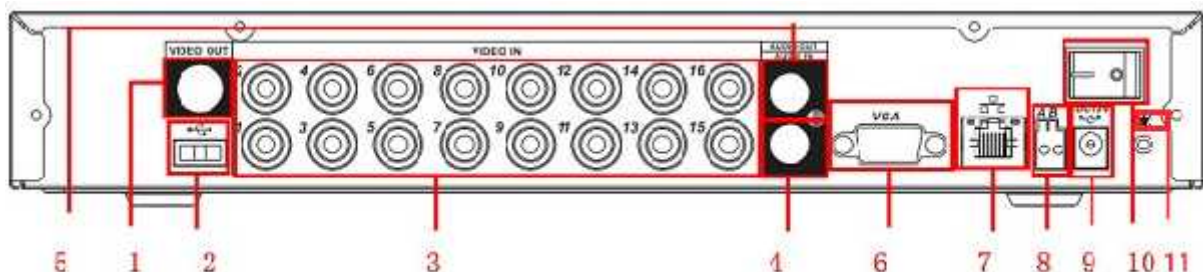


Figure 1-4 16-channel

Please refer to the following sheet for detailed information.

1	Video CVBS output
2	USB Port
3	Video Input
4	Audio Input
5	Audio Output
6	Video VGA output
7	Network port
8	RS 485 port
9	Power input port
10	Power button
11	GND

### 1.3 Connection Sample

Please refer to Figure 1-5 for mini 1U series product connection sample.

The following figure is based on one 16-channel series.

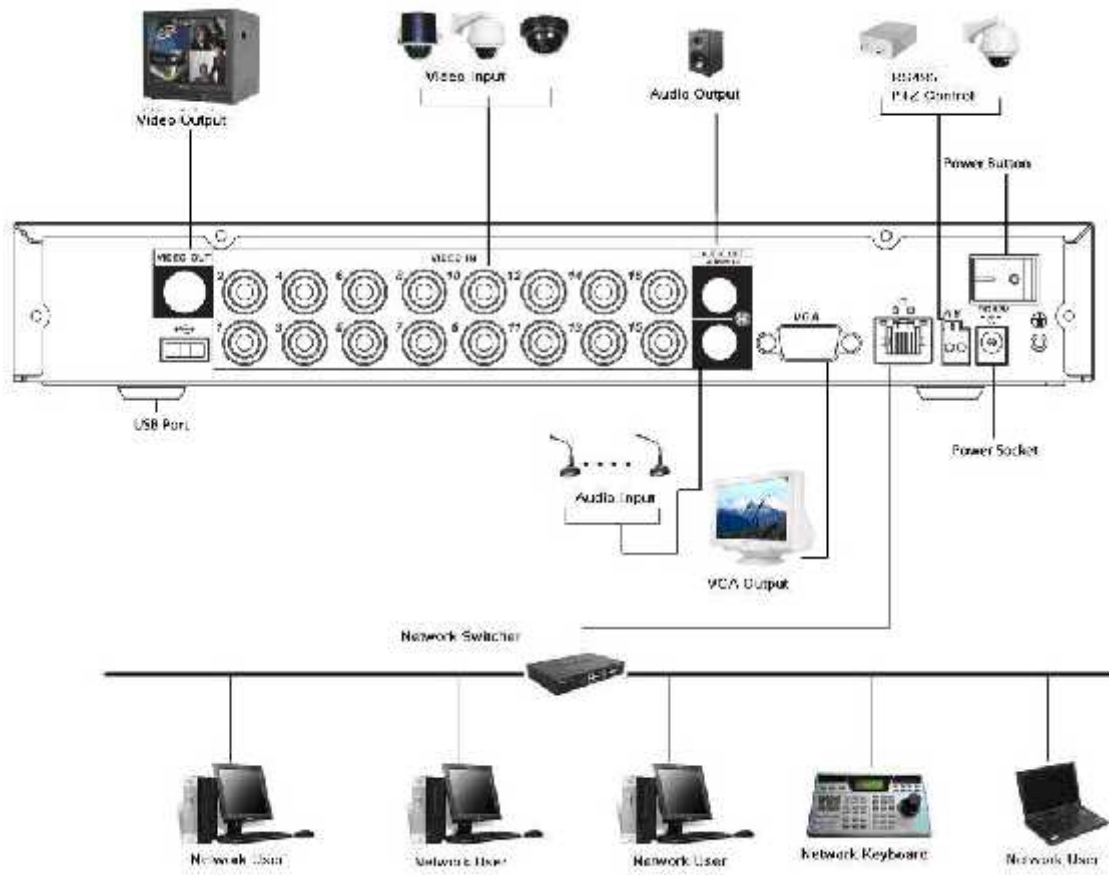


Figure 1-5 Connecting sample

## 2 Installation and Connections

**Note:** All the installation and operations here should conform to your local electric safety rules.

### 2.1 Check Unpacked DVR

When you receive the DVR from the forwarding agent, please check whether there is any visible damage. The protective materials used for the package of the DVR can protect most accidental clashes during transportation. Then you can open the box to check the accessories.

Please check the items in accordance with the list on the warranty card (Remote control is optional). Finally you can remove the protective film of the DVR.

#### Note

Remote control is not a standard accessory and it is not included in the accessory bag.

### 2.2 About Front Panel and Rear Panel

For detailed information of the function keys in the front panel and the ports in the rear panel, please refer to the appendix for detailed information.

The model in the front panel is very important; please check according to your purchase order. The label in the rear panel is very important too. Usually we need you to represent the serial number when we provide the service after sales.

### 2.3 HDD Installation

This series DVR has only one SATA HDD. Please use HDD of 7200rpm or higher.

You can refer to the Appendix for recommended HDD brand.

Please follow the instructions listed below to install hard disk.



1. Loosen the screws of the upper cover and side panel.



2. Fix four screws in the HDD (Turn just three rounds).



3. Place the HDD in accordance with the four holes in the bottom.



4. Turn the device upside down and then turn the screws in firmly.



5. Fix the HDD firmly.



6. Connect the HDD cable and power cable.



7. Put the cover in accordance with the clip and then place the upper cover back.



8. Secure the screws in the rear panel and the side panel.

**Note:**

- You can connect the HDD data cable and the power cable first and then fix the HDD in the device.
- Please pay attention to the front cover. It adopts the vertical sliding design. You need to push the clip first and then put down.

## 3 Overview of Navigation and Controls

### Important

- Slight difference may be found in the interface. All the interfaces listed below are based on the mini 1U series product.
- The simple entry level series product does not support RS232 function.
- The 8/16-channel simple entry level series product does not support schedule snapshot function and etc. Please note for the 8-channel simple entry level series product, when you logged in the Web to operate real-time monitor/network playback/network download, the local-end 8-channel playback is disabled, and vice versa. The 16-channel simple entry level series product does not have the all-channel playback mode. That is to say, the 16-channel simple entry level series product only support 1/4-cannel playback mode.

### Before operation, please make sure:

- You have properly installed HDD and connect all the cable connections.
- The provided input power and the device power are matched.
- The external power shall be DC +12V.
- Always use the stable current, if necessary UPS is a best alternative measure.

## 3.1 Login, Logout & Main Menu

### 3.1.1 Login

After system booted up, default video display is in multiple-window mode.

Click Enter or left click mouse, you can see the login interface. See Figure 3-1.

System consists of four accounts:

- **Username:** admin. **Password:** admin. (administrator, local and network)
- **Username:** 888888. **Password:** 888888. (administrator, local only)
- **Username:** 666666. **Passwords:** 666666(Lower authority user who can only monitor, playback, backup and etc.)
- **Username:** default. **Password:** default(hidden user)

You can use USB mouse, front panel, remote control or keyboard to input. About input method:

Click  to switch between numeral, English character (small/capitalized) and denotation.

### Note:

**For security reason, please modify password after you first login.**

Within 30 minutes, three times login failure will result in system alarm and five times login failure will result in account lock!



Figure 3-1

### 3.1.2 Main Menu

After you logged in, the system main menu is shown as below. See Figure 3-2.

There are total six icons: search, information, setting, backup, advanced and shutdown. You can move the cursor to highlight the icon, and then double click mouse to enter the sub-menu.

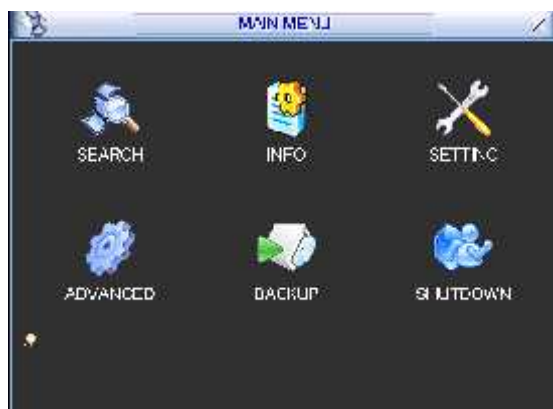


Figure 3-2

### 3.1.3 Logout

There are two ways for you to log out.

One is from menu option:

In the main menu, click shutdown button, you can see an interface is shown as below. See Figure 3-3.



Figure 3-3

There are several options for you. See Figure 3-4.



Figure 3-4

The other ways is to press power button on the front panel for at least 3 seconds, system will stop all operations. Then you can click the power button in the rear panel to turn off the DVR.

### 3.1.4 Auto Resume after Power Failure

The system can automatically backup video and resume previous working status after power failure.

### 3.1.5 Replace Button Battery

Please make sure to use the same battery model if possible.

We recommend replace battery regularly (such as one-year) to guarantee system time accuracy.

**Note:**

Before replacement, please save the system setup, otherwise, you may lose the data completely!

**3.1.6 Preview Zoom Function**

Move your mouse to the left top corner of the preview interface; you can see the preview zoom button. See Figure 3-5. Left click the icon; you can see a hook icon. Now you have enabled the preview zoom function. You can drag the mouse to zoom in the image.

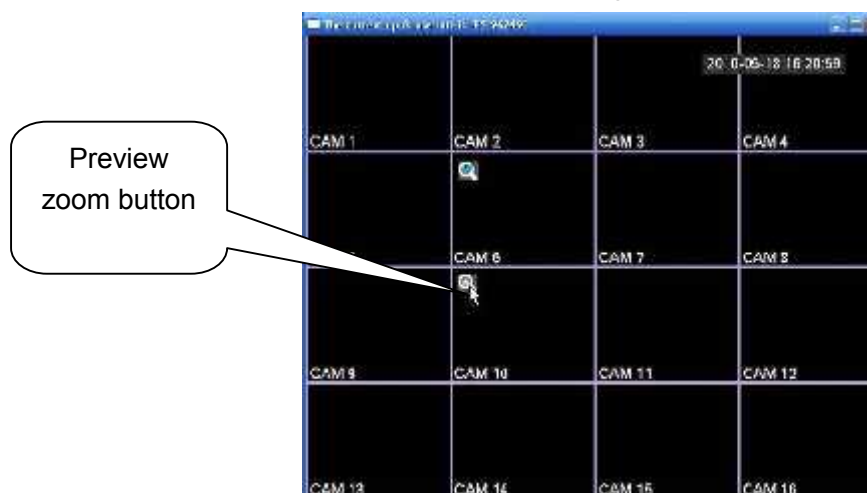


Figure 3-5

**3.2 Live Viewing**

After you logged in, the system is in live viewing mode. You can see system date, time and channel name. If you want to change system date and time, you can refer to general settings (Main Menu->Setting->General). If you want to modify the channel name, please refer to the display settings (Main Menu->Setting->Display)

1		Recording status	3		Video loss
2		Motion detection	4		Camera lock

**3.3 Schedule**

After system booted up, it is in default 24-hour regular mode. You can set record type and time in schedule interface.

In the main menu, from setting to schedule, you can go to schedule menu. See Figure 3-6. Channel: Please select the channel number first. You can select “all” if you want to set for the whole channels.

- Week day: There are eight options: ranges from Saturday to Sunday and all.

- Pre-record: System can pre-record the video before the event occurs into the file. The value ranges from 1 to 30 seconds depending on the bit stream.
- Snapshot: You can enable this function to snapshot image when alarm occurs.
- Record types: There are four types: regular, motion detection (MD), Alarm, MD & alarm.

Please highlight icon  to select the corresponding function. After completing all the setups please click save button, system goes back to the previous menu.

At the bottom of the menu, there are color bars for your reference. Green color stands for regular recording, yellow color stands for motion detection and red color stands for alarm recording. The white means the MD and alarm record is valid. Once you have set to record when the MD and alarm occurs, system will not record neither motion detect occurs nor the alarm occurs.



Figure 3-6

## 3.4 Manual record

### Note:

You need to have proper rights to implement the following operations. Please make sure the HDD has been properly installed.

#### 3.4.1.1 Manual record menu

There are two ways for you to go to manual record menu.

- Right click mouse or in the main menu, Advanced->Manual Record.
- In live viewing mode, click record button in the front panel or record button in the remote control.

Manual record menu is shown as in Figure 3-7.

#### 3.4.1.2 Basic operation

There are three statuses: schedule/manual/stop. Please highlight icon “○” to select corresponding channel.

- Manual: The highest priority. After manual setup, all selected channels will begin ordinary recording.
- Schedule: Channel records as you have set in recording setup (Main Menu->Setting->Schedule)
- Stop: All channels stop recording.



Figure 3-7

### 3.5 Encode

Encode setting includes the following items. See Figure 3-8.

Please note some series do not support extra stream.

- Channel: Select the channel you want.
- Compression: System supports H.264.
- Resolution: System supports various resolutions, you can select from the dropdown list. For this model, main stream supports D1/CIF/QCIF. Please note the resolution may vary due to different channels. The extra stream supports QCIF only.
- Frame rate: It ranges from 1f/s to 25f/s in NTSC mode and 1f/s to 30f/s in PAL mode.

**Note:**

For the 8-ch series DVR, you can refer to the following information:

If the 1-channel resolution is D1 and the frame rate is more than 6f/s, then the rest seven channels (the second channel to the eighth channel) resolution shall be CIF or QCIF.

If the 1-channel resolution is D1 and the frame rate is or less than 6f/s, then the rest seven channels (the second channel to the eighth channel) resolution shall be D1/CIF/QCIF. Right now in D1 resolution, the max frame rate is 6f/s.

- Bit rate type: System supports two types: CBR and VBR. In VBR mode, you can set video quality.
- Quality: There are six levels ranging from 1 to 6. The sixth level has the highest image quality.
- Video/audio: You can enable or disable the video/audio.
- Overlay: Click overlay button, you can see an interface is shown in Figure 3-9.
- Cover area (Privacy mask): Here is for you to set privacy mask section. You can drag you mouse to set proper section size. In one channel video, system max supports 4 zones.
- ✧ Preview/monitor: privacy mask has two types. Preview and Monitor. Preview means the privacy mask zone can not be viewed by user when system is in preview status. Monitor means the privacy mask zone can not be view by the user when system is in monitor status.
- ✧ Time display: You can select system displays time or not when you playback. Please click set button and then drag the title to the corresponding position in the screen.
- ✧ Channel display: You can select system displays channel number or not when you playback. Please click set button and then drag the title to the corresponding position in the screen.

Please highlight icon  to select the corresponding function.

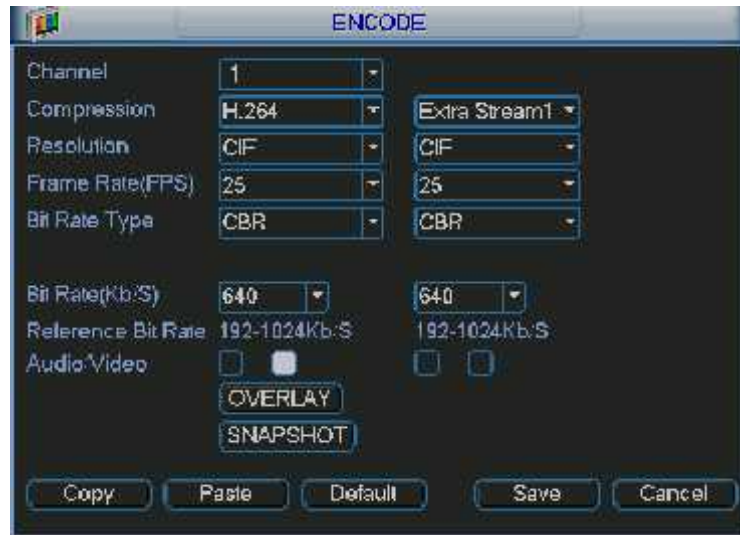


Figure 3-8

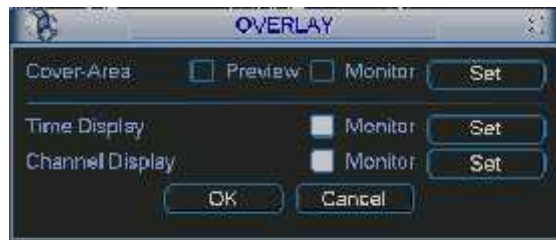


Figure 3-9

### 3.5.1 Snapshot

#### 3.5.1.1 Schedule Snapshot

In Encode interface, click snapshot button to input snapshot mode, size, quality and frequency.

In General interface please input upload interval.

In Schedule interface, please enable snapshot function.

Please refer to the following figure for detailed information. See Figure 3-10.

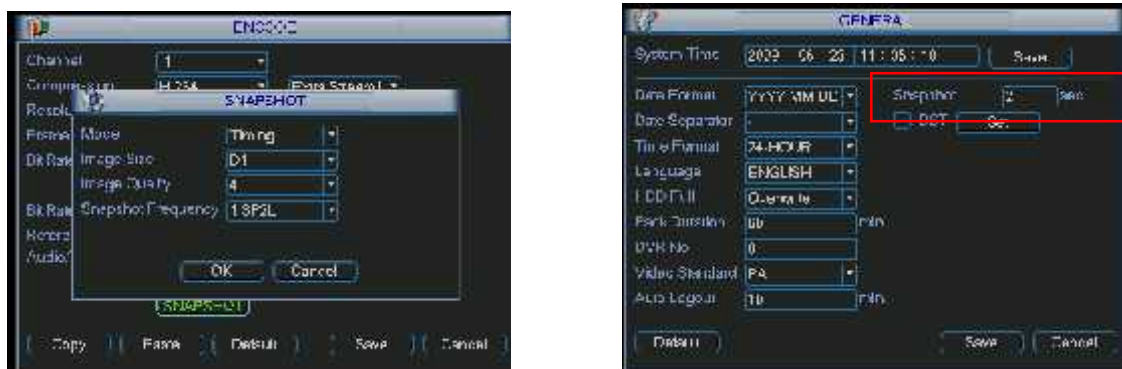




Figure 3-10

### 3.5.1.2 Activation Snapshot

Please follow the steps listed below to enable the activation snapshot function. After you enabled this function, system can snapshot when the corresponding alarm occurred.

- In Encode interface, click snapshot button to input snapshot mode, size, quality and frequency.
- In General interface please input upload interval.
- In Detect interface please enable snapshot function for specified channels. Or in alarm interface please enable snapshot function for specified channels.

Please refer to the following figure for detailed information. See Figure 3-11.

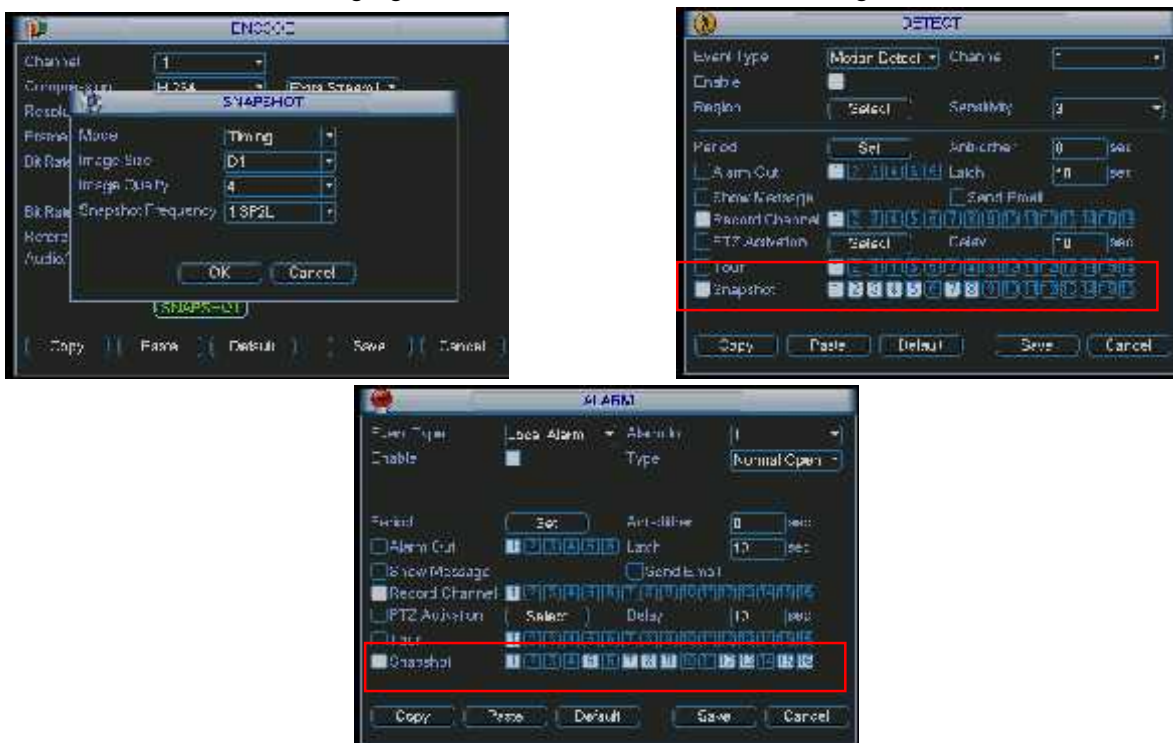


Figure 3-11

### 3.5.1.3 Priority

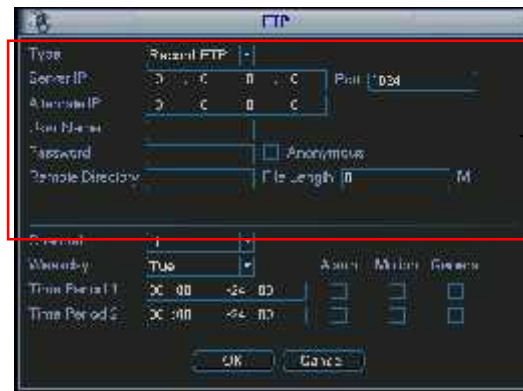
Please note the activation snapshot has the higher priority than schedule snapshot. If you have enabled these two types at the same time, system can activate the activation snapshot when alarm occurs, and otherwise system just operates the schedule snapshot.

## 3.5.2 Image FTP

In Network interface, you can set FTP server information. Please enable FTP function and then click save button. See Figure 3-12.

Please boot up corresponding FTP server.

Please enable schedule snapshot (Chapter 4.4.2.1) or activation snapshot (Chapter 4.4.2.2) first, now system can upload the image file to the FTP server.



Please input the corresponding information here, if you just upload the image FTP.

Figure 3-12

### 3.6 Search & Playback

Click search button in the main menu, search interface is shown as below.

Usually there are three file types:

- R: Regular recording file.
- A: External alarm recording file.
- M: Motion detection recording file

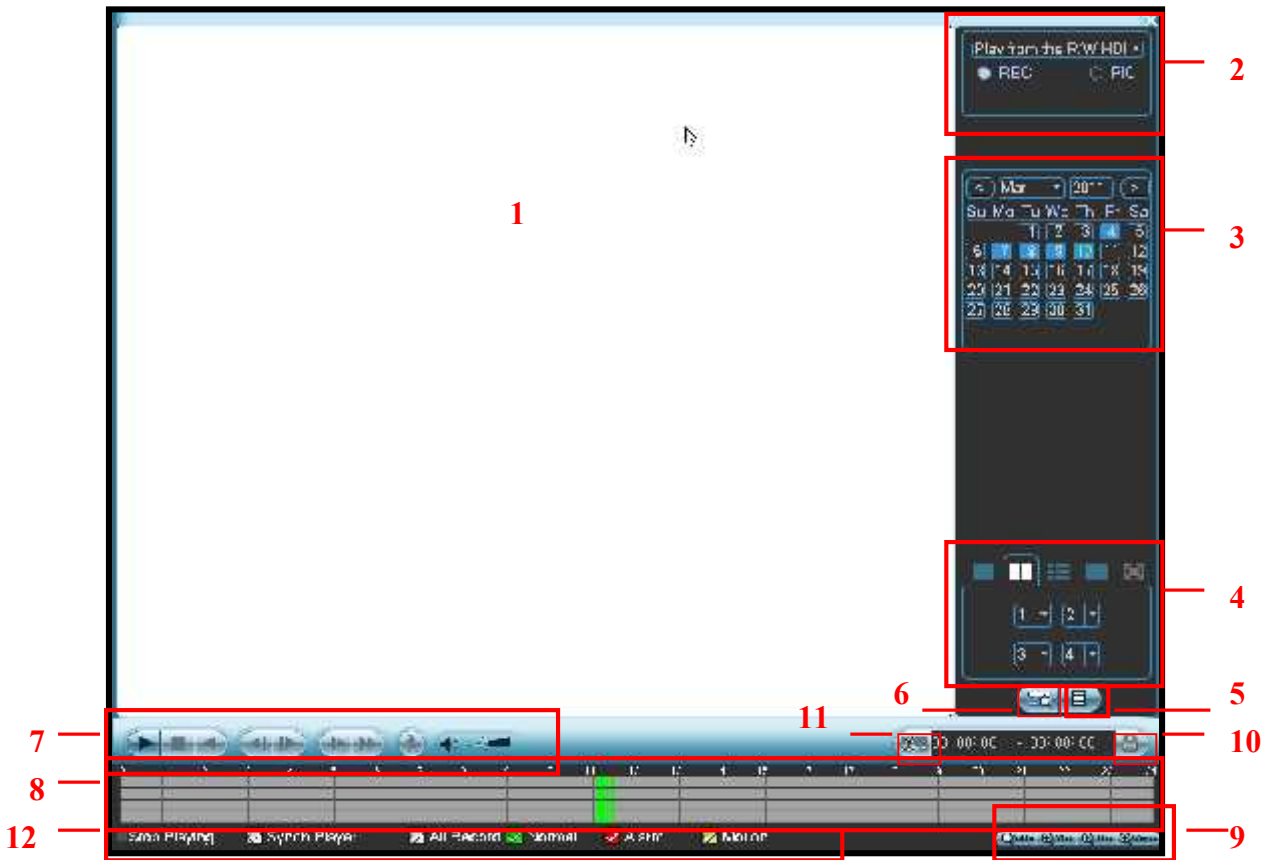
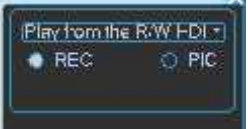













Figure 3-13

Please refer to the following sheet for more information.

SN	Name	Function
1	Display window	<ul style="list-style-type: none"> <li>●Here is to display the searched picture or file.</li> <li>●Support 1/4/9/16-window playback.</li> </ul>
2	Search type	<ul style="list-style-type: none"> <li>●Here you can select to search the picture or the recorded file.</li> <li>●When there is displayed picture on the left pane, you can set the corresponding setup</li> </ul> 
3	Calendar	<ul style="list-style-type: none"> <li>●The blue highlighted date means there is picture or file. Otherwise, there is no picture or file.</li> <li>●In any play mode, click the date you want to see, you can see the corresponding record file trace in the time bar.</li> </ul>
4	Playback mode and channel selection pane.	<ul style="list-style-type: none"> <li>●Playback mode: 1/4/9/16. (It may vary due to different series.) <ul style="list-style-type: none"> <li>◇ In 1-window playback mode: you can select 1-16 channels.</li> <li>◇ In 4-window playback mode: you can select 4 channels according to your requirement.</li> <li>◇ In 9-window playback mode, you can switch between 1-9 and 10-16 channels.</li> <li>◇ In 16-window playback mode, you can switch between 1-16 and 17-32 channels.</li> </ul> </li> <li>●The time bar will change once you modify the playback mode or the channel option.</li> </ul>

5	File list switch button	<ul style="list-style-type: none"> <li>●Double click it, you can view the picture/record file list of current day.</li> <li>●The file list is to display the first channel of the record file.</li> <li>●The system can display max 128 files in one time. Use the ▲/▼ or the mouse to view the file. Select one item, and then double click the mouse or click the ENTER button to playback.</li> <li>●You can input the period in the following interface to begin accurate search.</li> <li>●File type: R—regular record; A—external alarm record; M—Motion detect record.</li> </ul> 																				
6	Card number search	<p>The card number search interface is shown as below.</p> 																				
7	Playback control pane.	<table border="1"> <tr> <td data-bbox="470 629 555 824">▶/  </td> <td data-bbox="555 629 1524 824"> <p>Play/Pause There are three ways for you to begin playback.</p> <ul style="list-style-type: none"> <li>● The play button</li> <li>● Double click the valid period of the time bar.</li> <li>● Double click the item in the file list.</li> </ul> <p>In slow play mode, click it to switch between play/pause.</p> </td> </tr> <tr> <td data-bbox="470 824 555 862">■</td> <td data-bbox="555 824 1524 862"> <p>Stop</p> </td> </tr> <tr> <td data-bbox="470 862 555 992">◀</td> <td data-bbox="555 862 1524 992"> <p>Backward play In normal play mode, left click the button, the file begins backward play. Click it again to pause current play. In backward play mode, click ▶/   to restore normal play.</p> </td> </tr> <tr> <td data-bbox="470 992 555 1155"> ◀/▶ </td> <td data-bbox="555 992 1524 1155"> <p>In playback mode, click it to play the next or the previous section. You can click continuously when you are watching the files from the same channel. In normal play mode, when you pause current play, you can click ◀  and  ▶ to begin frame by frame playback. In frame by frame playback mode, click ▶/   to restore normal playback.</p> </td> </tr> <tr> <td data-bbox="470 1155 555 1274">▶·</td> <td data-bbox="555 1155 1524 1274"> <p>Slow play In playback mode, click it to realize various slow play modes such as slow play 1, slow play 2, and etc.</p> </td> </tr> <tr> <td data-bbox="470 1274 555 1393">▶▶</td> <td data-bbox="555 1274 1524 1393"> <p>Fast forward In playback mode, click to realize various fast play modes such as fast play 1,fast play 2 and etc.</p> </td> </tr> <tr> <td colspan="2" data-bbox="470 1393 1524 1447">Note: The actual play speed has relationship with the software version.</td> </tr> <tr> <td data-bbox="470 1447 555 1520"></td> <td data-bbox="555 1447 1524 1520">Smart search</td> </tr> <tr> <td data-bbox="470 1520 555 1639"></td> <td data-bbox="555 1520 1524 1639">The volume of the playback</td> </tr> <tr> <td data-bbox="470 1639 555 1715"></td> <td data-bbox="555 1639 1524 1715">Click the snapshot button in the full-screen mode, the system can snapshot 1 picture per second.</td> </tr> </table>	▶/	<p>Play/Pause There are three ways for you to begin playback.</p> <ul style="list-style-type: none"> <li>● The play button</li> <li>● Double click the valid period of the time bar.</li> <li>● Double click the item in the file list.</li> </ul> <p>In slow play mode, click it to switch between play/pause.</p>	■	<p>Stop</p>	◀	<p>Backward play In normal play mode, left click the button, the file begins backward play. Click it again to pause current play. In backward play mode, click ▶/   to restore normal play.</p>	◀/▶	<p>In playback mode, click it to play the next or the previous section. You can click continuously when you are watching the files from the same channel. In normal play mode, when you pause current play, you can click ◀  and  ▶ to begin frame by frame playback. In frame by frame playback mode, click ▶/   to restore normal playback.</p>	▶·	<p>Slow play In playback mode, click it to realize various slow play modes such as slow play 1, slow play 2, and etc.</p>	▶▶	<p>Fast forward In playback mode, click to realize various fast play modes such as fast play 1,fast play 2 and etc.</p>	Note: The actual play speed has relationship with the software version.			Smart search		The volume of the playback		Click the snapshot button in the full-screen mode, the system can snapshot 1 picture per second.
▶/	<p>Play/Pause There are three ways for you to begin playback.</p> <ul style="list-style-type: none"> <li>● The play button</li> <li>● Double click the valid period of the time bar.</li> <li>● Double click the item in the file list.</li> </ul> <p>In slow play mode, click it to switch between play/pause.</p>																					
■	<p>Stop</p>																					
◀	<p>Backward play In normal play mode, left click the button, the file begins backward play. Click it again to pause current play. In backward play mode, click ▶/   to restore normal play.</p>																					
◀/▶	<p>In playback mode, click it to play the next or the previous section. You can click continuously when you are watching the files from the same channel. In normal play mode, when you pause current play, you can click ◀  and  ▶ to begin frame by frame playback. In frame by frame playback mode, click ▶/   to restore normal playback.</p>																					
▶·	<p>Slow play In playback mode, click it to realize various slow play modes such as slow play 1, slow play 2, and etc.</p>																					
▶▶	<p>Fast forward In playback mode, click to realize various fast play modes such as fast play 1,fast play 2 and etc.</p>																					
Note: The actual play speed has relationship with the software version.																						
	Smart search																					
	The volume of the playback																					
	Click the snapshot button in the full-screen mode, the system can snapshot 1 picture per second.																					
8	Time bar	<ul style="list-style-type: none"> <li>●It is to display the record type and its period in current search criteria.</li> <li>●In 4-window playback mode, there are corresponding four time bars. In other playback mode, there is only one time bar.</li> <li>●Use the mouse to click one point of the color zone in the time bar, system begins playback.</li> <li>●The time bar is beginning with 0 o'clock when you are setting the configuration. The time bar zooms in the period of the current playback time when you are playing the file.</li> <li>●The green color stands for the regular record file. The red color stands for the external alarm record file. The yellow stands for the motion detect record file.</li> </ul>																				
9	Time bar	<ul style="list-style-type: none"> <li>●The option includes: 24H, 12H, 1H and 30M. The smaller the unit, the larger the</li> </ul>																				

	unit	zoom rate. You can accurately set the time in the time bar to playback the record. ●The time bar is beginning with 0 o'clock when you are setting the configuration. The time bar zooms in the period of the current playback time when you are playing the file.
10	Backup	Select the file(s) you want to backup from the file list. System max supports files from four channels. Then click the backup button, now you can see the backup menu. Click the start button to begin the backup operation. Check the file again you can cancel current selection. System max supports to display 32 files from one channel.
11	Clip	●It is to edit the file. ●Please play the file you want to edit and then click this button when you want to edit. You can see the corresponding slide bar in the time bar of the corresponding channel. You can adjust the slide bar or input the accurate time to set the file end time. Click this button again and then save current contents in a new file. .
12	Record type	In any play mode, the time bar will change once you modify the search type.
13	Smart search	<ul style="list-style-type: none"> <li>● When system is playing, you can select a zone in the window to begin motion detect. Click the motion detect button to begin play.</li> <li>● Current button is null once the motion detect play has begun.</li> <li>● The system will take the whole play zone as the motion detect region by default.</li> <li>● The motion detect play stopped once you switch the play file.</li> <li>● Operations such as set time bar, click the play button, or any file list operation will stop current motion detect play.</li> </ul>
<b>Other Functions</b>		
14	Other channel synchronization switch to play when playback	When playing the file, click the number button, system can switch to the same period of the corresponding channel to play.
15	Digital zoom	When the system is in full-screen playback mode, left click the mouse in the screen. Drag your mouse in the screen to select a section and then left click mouse to realize digital zoom. You can right click mouse to exit.

**Note:**

All the operations here (such as playback speed, channel, time and progress) have relationship with hardware version. Some series DVRs do not support some functions or playback speeds.

## Basic Operation

### Playback

There are various search modes: video type, channel number or time. The system can max display 128 files in one screen. You can use page up/down button to view if there are more than one page.

Select the file name and double click mouse (or click enter button), you can view file content.

- Playback Mode

There are two playback modes: 4-ch and all-channel. In 4-ch playback mode, you can select the 1/2/3/4-ch playback according to your requirement. In all-channel mode, system can playback in full channels. Please note the 4-ch series product does not have all-channel playback mode. The 16-channel simple entry level series product does not have all-channel playback mode.

- Accurate playback

Input time (h/m/s) in the time column and then click playback button, system can operate accurate playback.

- Synchronized playback function when playback



During playback process, click numeral key, system can switch to the corresponding channel video of the same time.

- Digital zoom

When the system is in full-screen playback mode, drag your mouse in the screen to select a section and then left click mouse to realize digital zoom. You can right click mouse to exit.

### 3.6.1.1 File backup and clip

System supports backup operation during search. You can draw a √ before file name (multiple choices). Then click backup button

If you want to clip a period of file, please playback the original file first. Click the  at the start point (that is your new file beginning point). Drag the file to the end point (that is your new file end point) and then click the  again. Click the backup button to save your current new file.

- Slow playback and fast playback

Please refer to the following sheet for slow play and fast playback function.

Button	Illustration	Remarks
Fast play button ►►	In playback mode, click this button to switch between various fast play modes such as fast play 1, fast play 2 and more.	Frame rate may vary due to different versions.
Slow play button ►	In playback mode, click this button to switch between various slow play modes such as slow play 1 or slow play 2.	
Play/Pause ►	In slow playback mode, click this button to switch between play/pause modes.	
Previous/next	In playback mode, you can click  ◀ and ▶  to view previous or next video in current channel.	

### 3.6.1.2 Backward playback and frame by frame playback

Button	Illustration	Remarks
Backward play:   ◀ in playback interface.	In normal playback mode, left click backward play button◀, system begins backward playback. Double click backward play button again, system goes to pause mode.	When system is in backward play or frame by frame playback mode, you can click play button►/    to go to normal playback.
Manual playback frame by frame.	Click pause button in normal playback mode, you can use ◀  and  ▶ to view frame by frame.	

#### Note:

All the operations here (such as playback speed, channel, time and progress) have relationship with hardware version. Some series DVRs do not support some functions or playback speeds.

## 3.7 Network

Here is for you to input network information. See Figure 3-14.

- IP address: Here you can input IP address.
- DHCP: It is to auto search IP. When enable DHCP function, you can not modify IP/Subnet mask /Gateway. These values are from DHCP function. If you have not enabled DHCP function, IP/Subnet mask/Gateway display as zero. You need to disable DHCP function to view current IP information. Besides, when PPPoE is operating, you can not modify IP/Subnet mask /Gateway.
- TCP port: Default value is 37777.
- UDP port: Default value is 37778.
- HTTP port: Default value is 80.
- Max connection: system support maximal 10 users. 0 means there is no connection limit.
- Preferred DNS: DNS IP address.
- Alternative DNS: DNS alternative IP address.
- Transfer mode: Here you can select the priority between fluency/video qualities.
- LAN download: System can process the downloaded data first if you enable this function. The download speed is 1.5X or 2.0X of the normal speed.

After completing all the setups please click save button, system goes back to the previous menu.

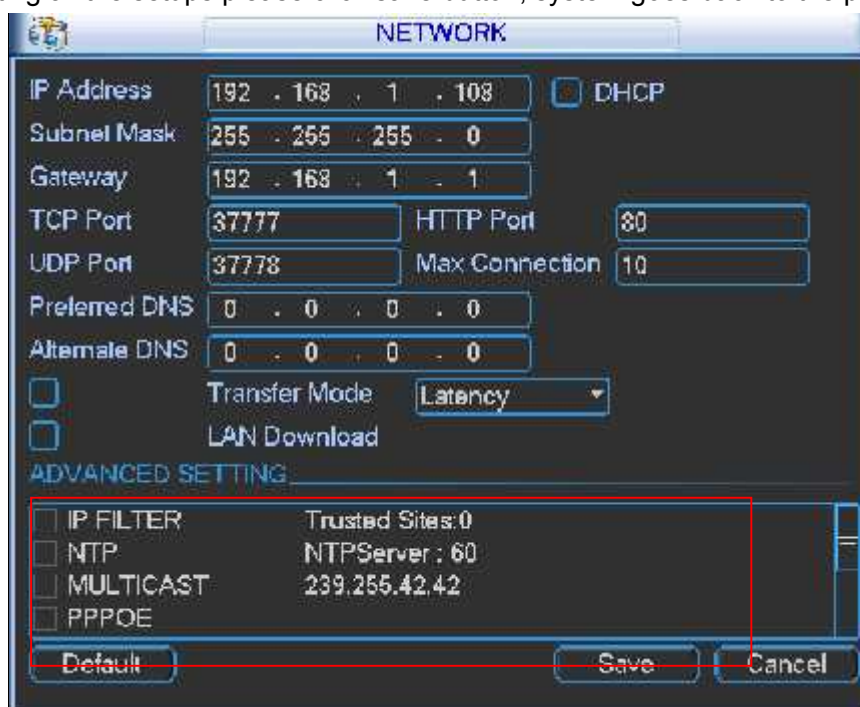


Figure 3-14

## 3.8 Pan/Tilt/Zoom

### 3.8.1 PTZ Setup

**Note:** The camera video should be in the current screen. Before setup, please check the following connections are right:

- PTZ and decoder connection is right. Decoder address setup is right.
- Decoder A (B) line connects with DVR A (B) line.

Boot up the DVR, input user name and password.

In the main menu, click setting, and then click Pan/Tilt Control button. The interface is shown as below. Here you can set the following items:

- Channel: select the current camera channel.
- Protocol: select corresponding PTZ protocol(such as PELCOD)
- Address: default address is 1.
- Baud rate: select corresponding baud rate. Default value is 9600.
- Data bits: select corresponding data bits. Default value is 8.
- Stop bits: select corresponding stop bits. Default value is 1.
- Parity: there are three options: odd/even/none. Default setup is none.



Figure 3-15

After completing all the setting please click save button.

### 3.8.2 PTZ Operation

In the one-window surveillance mode, right click mouse (click “fn” Button in the front panel or click AUX key in the remote control). The interface is shown as below: See \_Figure 6-1.



Figure 3-1

Click Pan/Tilt/Zoom, the interface is shown as in \_Figure 6-2.

Here you can set the following items:

- Zoom
- Focus
- Iris

Please click icon  and  to adjust zoom, focus and Iris.



Figure 3-2

In \_Figure 6-2, please click direction arrows (See \_Figure 6-3 ) to adjust PTZ position. There are totally eight direction arrows. (Please note there are only four direction arrows in DVR front panel.)



Figure 3-3

### 3.8.3 3D Intelligent Positioning Key

In the middle of the eight direction arrows, there is a 3D intelligent positioning key. See \_Figure 6-4 . Please make sure your protocol supports this function and you need to use mouse to control.

Click this button, system goes back to the single screen mode. Drag the mouse in the screen to adjust section size.



Figure 3-4

Here is a sheet for you reference.

Name	Function key	function	Shortcut key	Function key	function	Shortcut key
Zoom		Near			Far	
Focus		Near			Far	
Iris		close			Open	

## 4 WEB OPERATION

### Important

- Slight difference may be found in the interface. All the interfaces listed below are based on the mini 1U series product.
- The simple entry level series product does not support RS232 function.
- The 8/16-channel simple entry level series product does not support schedule snapshot function and etc. Please note for the 8-channel simple entry level series product, when you logged in the Web to operate real-time monitor/network playback/network download, the local-end 8-channel playback is disabled, and vice versa. The 16-channel simple entry level series product does not have the all-channel playback mode. That is to say, the 16-channel simple entry level series product only support 1/4-cannel playback mode.

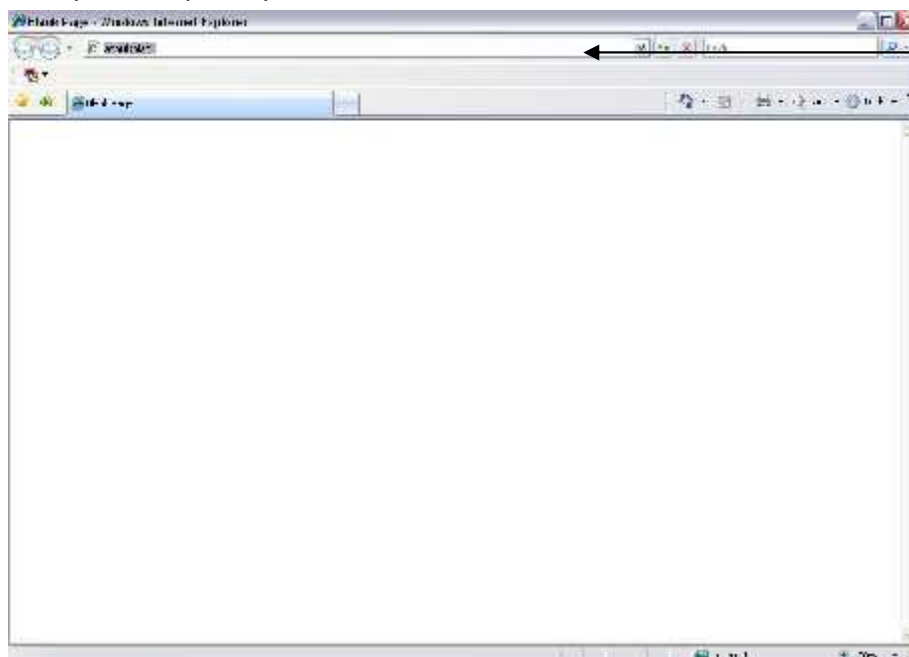
### 4.1 Network Connection

Before web operation, please check the following items:

- Network connection is right
- DVR and PC network setup is right. Please refer to network setup(main menu->setting->network)
- Use order ping `***.***.***.***`(\* DVR IP address) to check connection is OK or not. Usually the return TTL value should be less than 255.
- Open the IE and then input DVR IP address.
- System can automatically download latest web control and the new version can overwrite the previous one.
- If you want to un-install the web control, please run `uninstall webrec2.0.bat`. Or you can go to `C:\Program Files\webrec` to remove single folder. Please note, before you un-install, please close all web pages, otherwise the un-installation might result in error.

### 4.2 Login

Open IE and input DVR address in the address column. For example, if your DVR IP is 10.10.3.16, then please input `http:// 10.10.3.16` in IE address column.



Input your IP address here.

Figure 4-1

System pops up warning information to ask you whether install webrec.cab control or not. Please click yes button.

If you can't download the ActiveX file, please modify your settings as follows. See \_Figure 7-2.

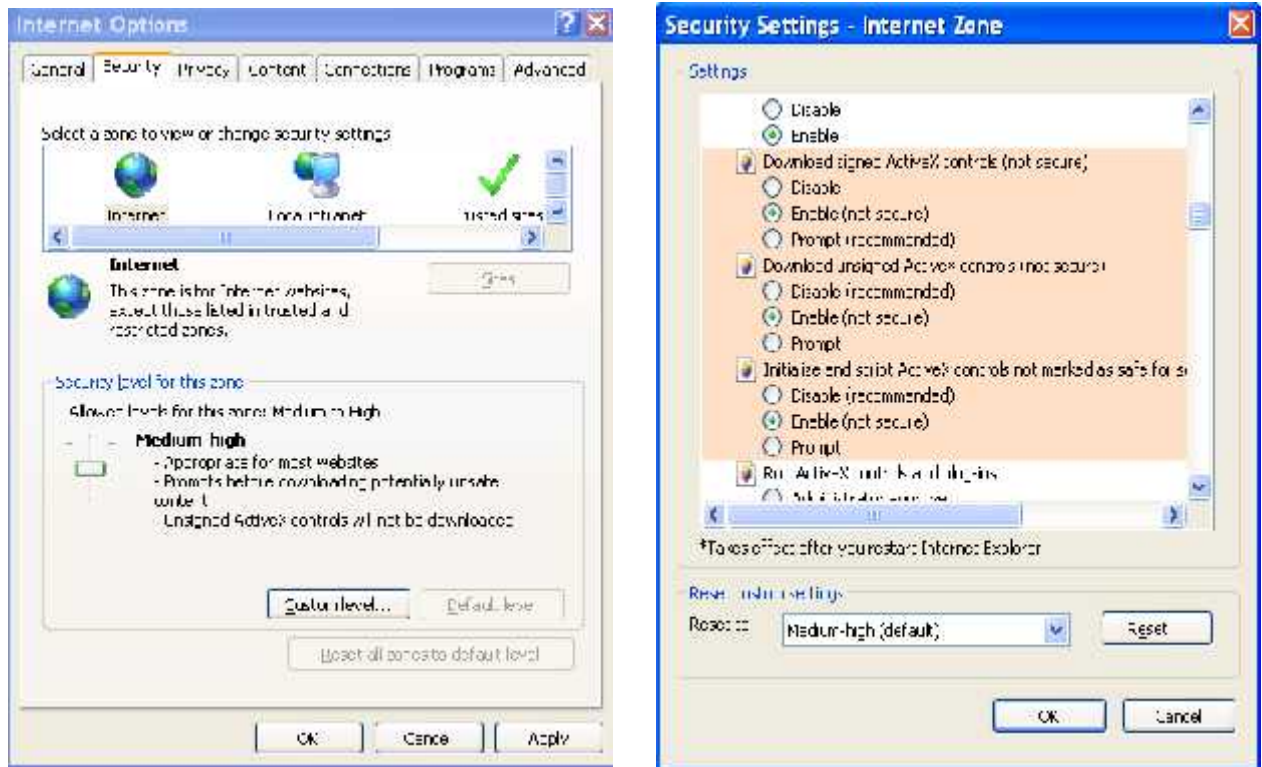


Figure 4-2

After installation, the interface is shown as below. See \_Figure 7-3.

Please input your user name and password.

Default factory name is admin and password is admin.

**Note:** For security reasons, please modify your password after you first login.

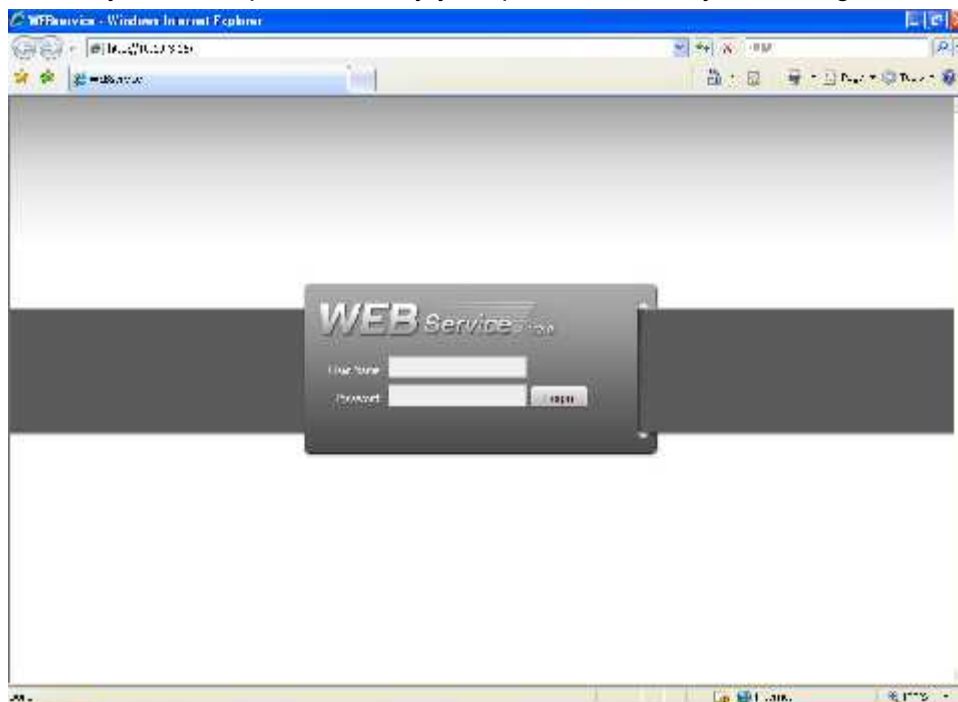


Figure 4-3

### 4.3 Main Window

After you logged in, you can see the main window shown as below.

Click the channel name on the left side; you can view the real-time video.

For detailed operation information, please refer to the *User's Manual* included in the resources CD.



Figure 4-4

## Appendix H Toxic or Hazardous Materials or Elements

Component Name	Toxic or Hazardous Materials or Elements					
	Pb	Hg	Cd	Cr VI	PBB	PBDE
Sheet Metal(Case)	○	○	○	○	○	○
Plastic Parts (Panel)	○	○	○	○	○	○
Circuit Board	○	○	○	○	○	○
Fastener	○	○	○	○	○	○
Wire and Cable/AC Adapter	○	○	○	○	○	○
Packing Material	○	○	○	○	○	○
Accessories	○	○	○	○	○	○

O: Indicates that the concentration of the hazardous substance in all homogeneous materials in the parts is below the relevant threshold of the SJ/T11363-2006 standard.

X: Indicates that the concentration of the hazardous substance of at least one of all homogeneous materials in the parts is above the relevant threshold of the SJ/T11363-2006 standard. During the environmental-friendly use period (EFUP) period, the toxic or hazardous substance or elements contained in products will not leak or mutate so that the use of these (substances or elements) will not result in any severe environmental pollution, any bodily injury or damage to any assets. The consumer is not authorized to process such kind of substances or elements, please return to the corresponding local authorities to process according to your local government statutes

**Note:**

- This manual is for reference only. Slight difference may be found in the user interface.
- All the designs and software here are subject to change without prior written notice.
- If there is any uncertainty or controversy, please refer to the final explanation of ours.
- Please visit our website or contact your local retailer for more information.