

iVMS-4500 (BlackBerry) Application Instruction

1. Device Requirement

BlackBerry Device: Bold 9000

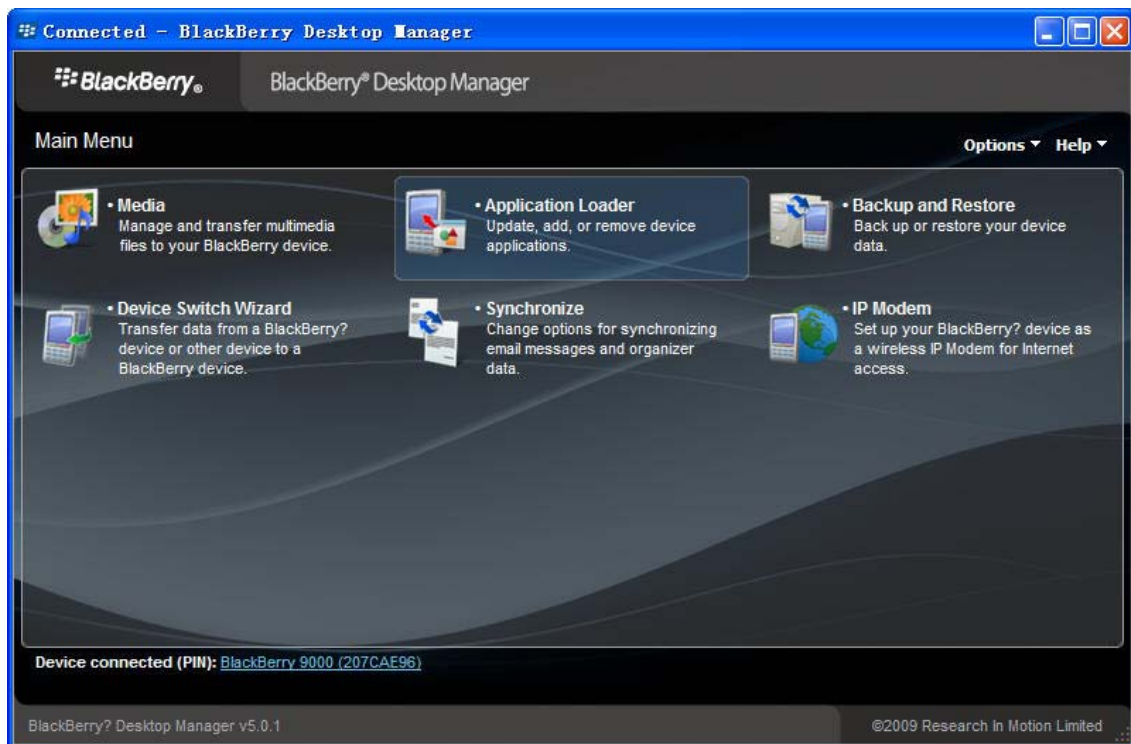
BlackBerry OS: V4.6 or V5.0 above

Desktop Manager: V4.7.0.37

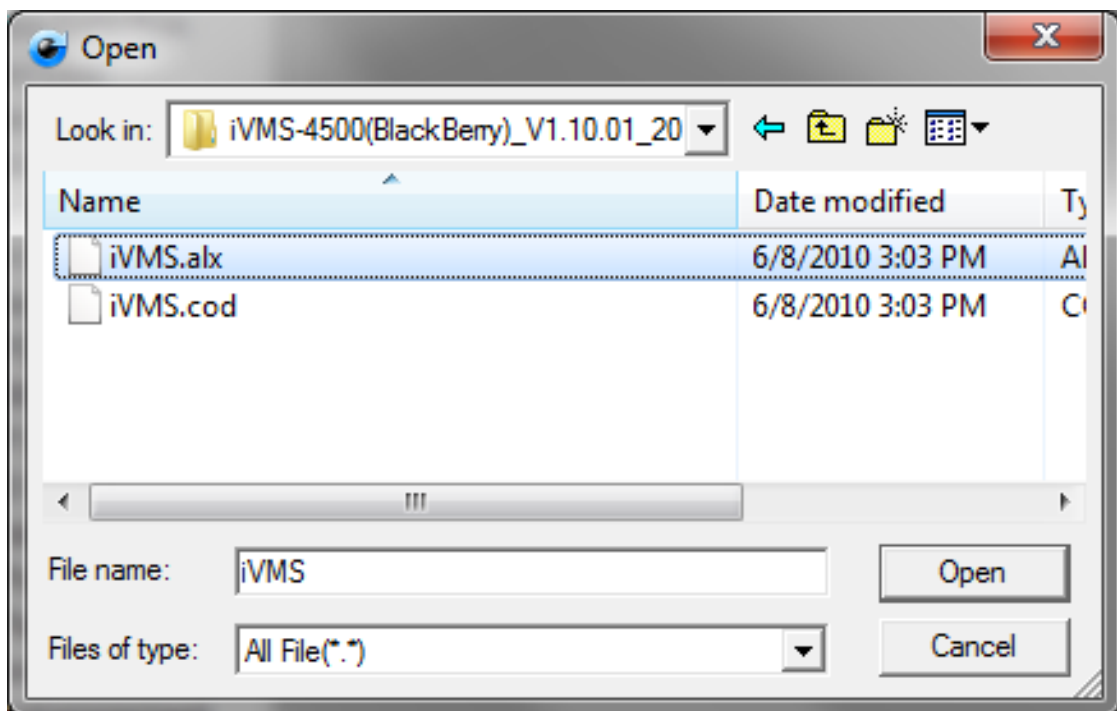
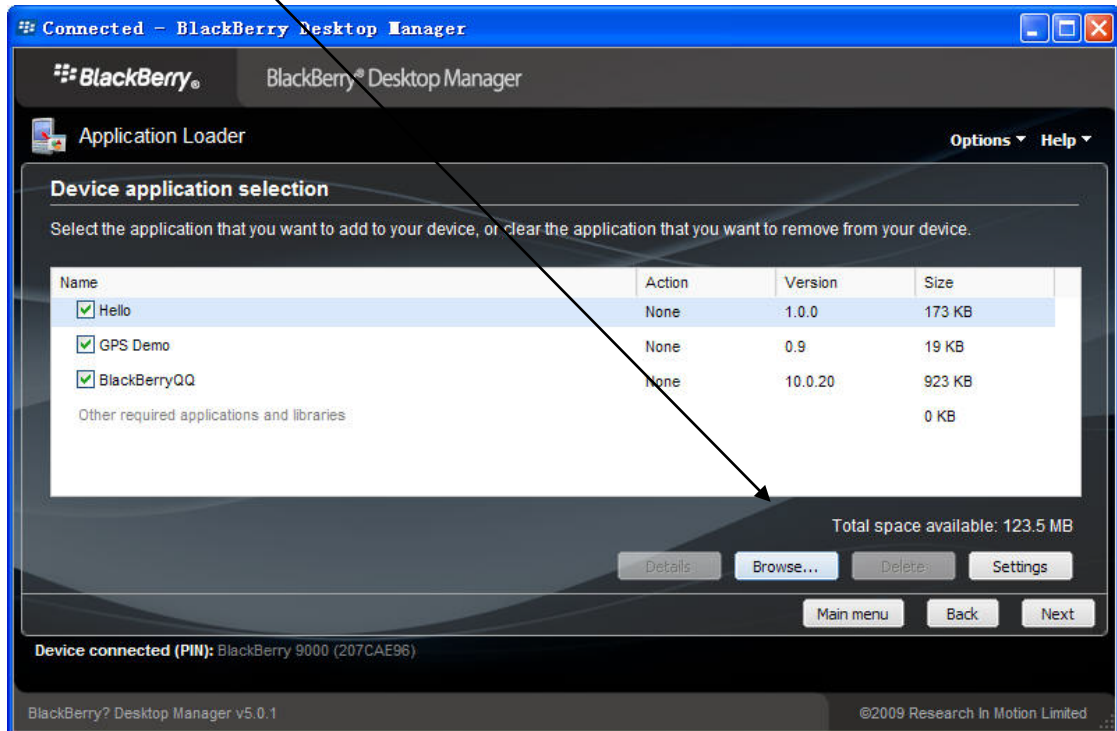
2. Installation

2.1 Install Desktop manager software

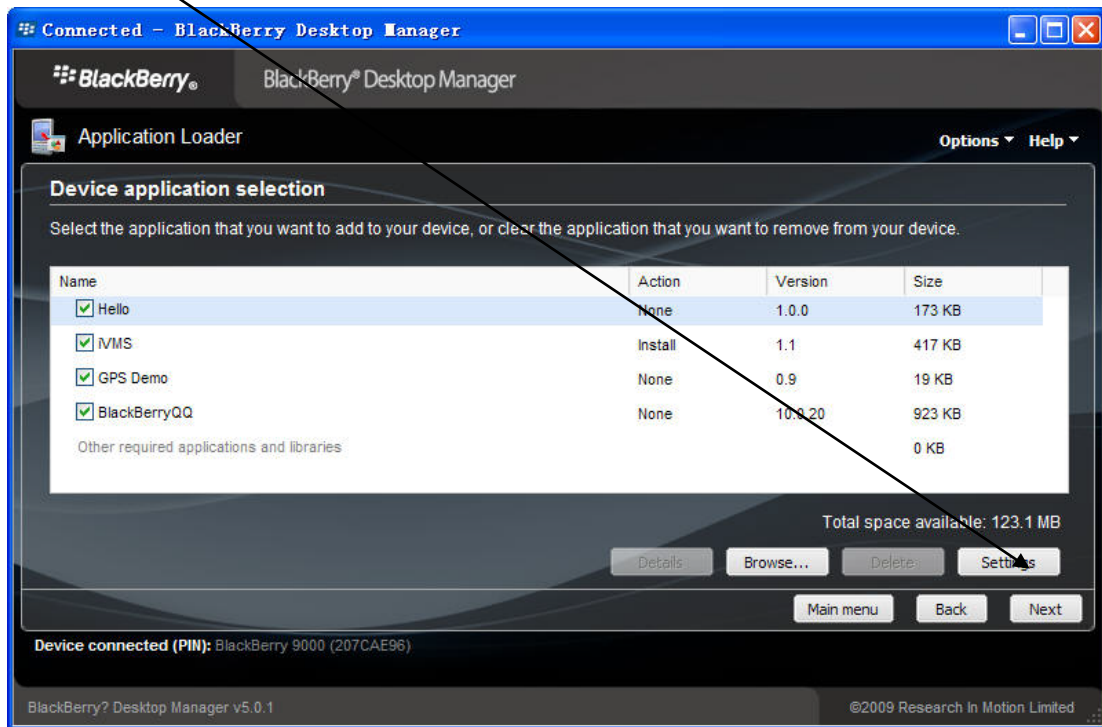
2.2 Run the desktop manager software after you finish the installation, select *App Loader*.



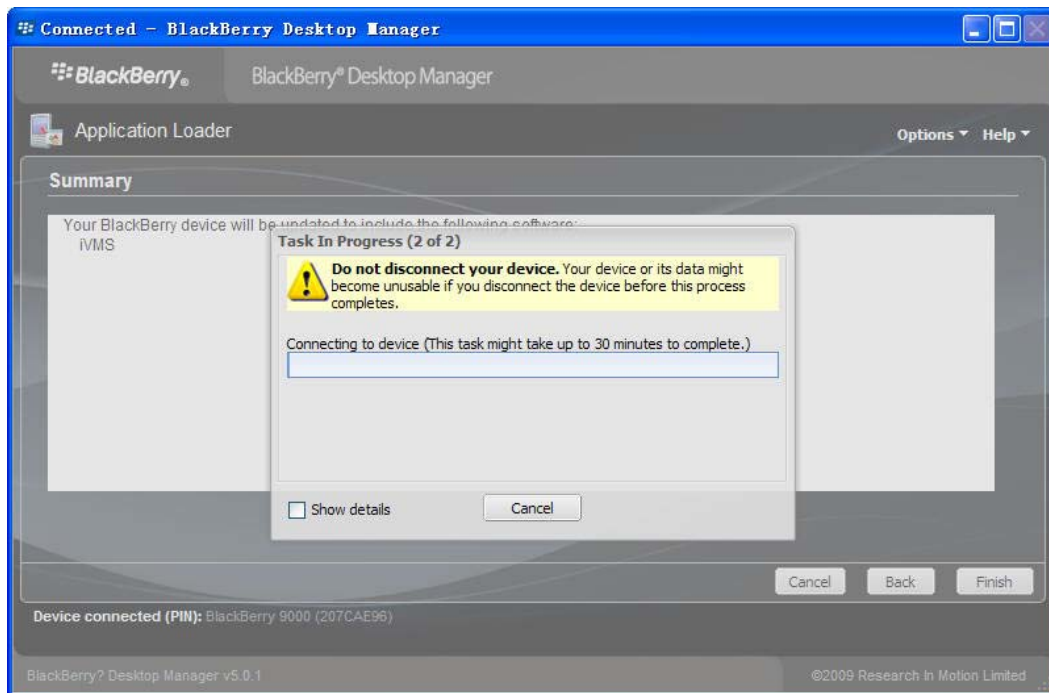
2.3 Click "Browse" to select the ".alx" file.



2.4 Next.



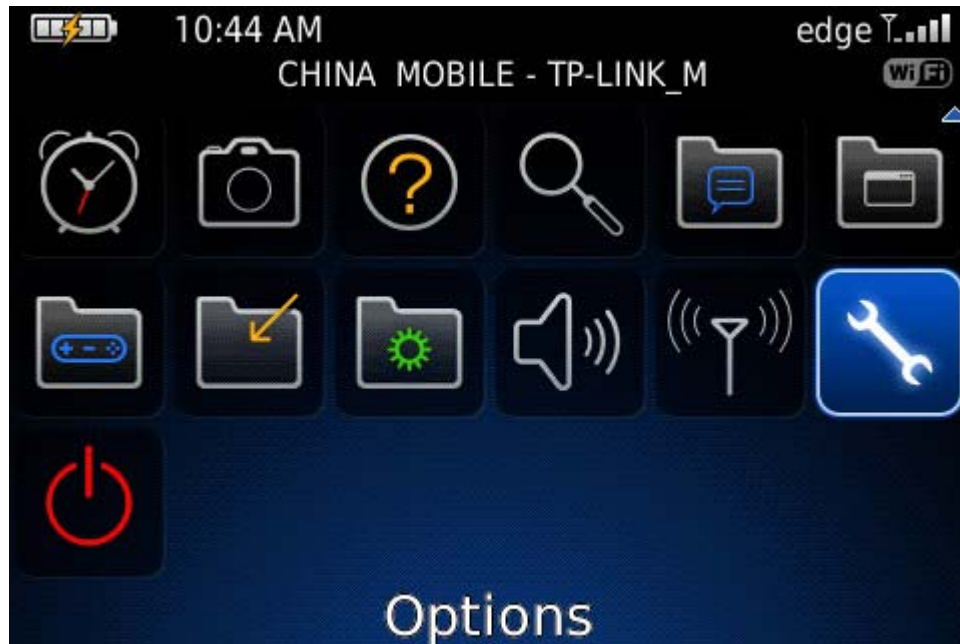
2.5 Click "Finish" to enter the mobile client installation.



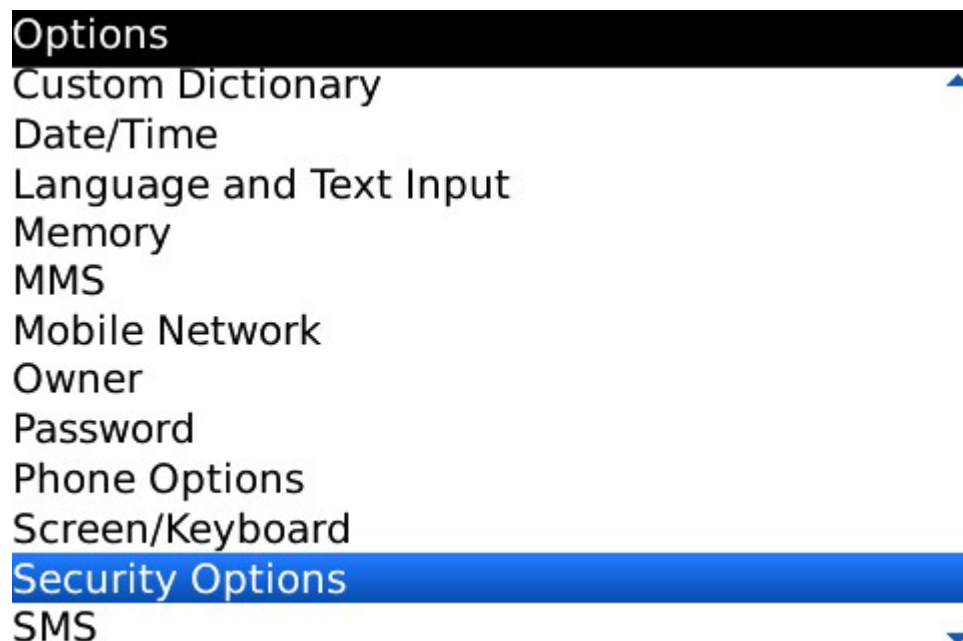
3. Settings

3.1 Firewall Settings

Enter into [Options]:



Select [Security Options] menu:



Select [Firewall]:

Security Options

Advanced Security Options

Encryption

Firewall

Information

Security Wipe

S/MIME

Setup "FireWall" as [Disable]

Firewall

Status:

Disabled ▾

Block Incoming Messages

<input type="checkbox"/> SMS	0 blocked
<input type="checkbox"/> MMS	0 blocked
<input type="checkbox"/> PIN	0 blocked
<input type="checkbox"/> BlackBerry Internet Service	0 blocked
<input type="checkbox"/> Enterprise email	0 blocked

Except messages from

- Contacts
- Specific addresses

3.2 Application Permission Settings





Enter into [Option] – [Applications]:

- Options
- About
- Advanced Options
- Applications**
- Auto On/Off
- AutoText
- Bluetooth
- Custom Dictionary
- Date/Time
- Language and Text Input
- Memory
- MMS
- Mobile Network ▼

Select [iVMS-4500]:

Applications: Third Party ▼

Find:

	BlackBerryQQ Tencent	10.0.20
	GPS Demo Research In Motion Ltd.	0.9
	Hello BlackBerry Developer	1.0.0
	iVMS-4500 JBenchmark	1.1

Click [Edit Permissions]:

iVMS-4500
Application Properties

Title: iVMS-4500
Version: 1.1
Vendor: JBenchmark

Delete Edit Permissions

Description: iVMS converted by Txt2Cod 1.0
Copyright: Copyright (c) 2006 Cheng Min
Installed: Jun 8, 2010 12:30 PM
Size: 358552 Bytes
Signature: This application is not signed

The default settings are

Permissions: iVMS-4500

RIM | MIDP groups | MIDP JSRs

+ Connections Custom ▼

+ Interactions Custom ▼

+ User Data Allow ▼

Application Modules
iVMS

Change default settings into:

Permissions: iVMS-4500

RIM | MIDP groups | MIDP JSRs

+ Connections	Allow ▾
+ Interactions	Allow ▾
+ User Data	Allow ▾

Application Modules
iVMS

3.3 APN Settings

Enter into [Option] – [Advanced Options]:

Options

- About
- Advanced Options**
- Applications
- Auto On/Off
- AutoText
- Bluetooth
- Custom Dictionary
- Date/Time
- Language and Text Input
- Memory
- MMS
- Mobile Network ▾

Select [TCP/IP] or [TCP]:

Advanced Options

Accessibility

Browser

Browser Push

Cell Broadcast Settings

Default Services

Enterprise Activation

GPS

Host Routing Table

Maps

Service Book

SIM Card

TCP/IP

Setup local wireless APN:

TCP/IP

APN Settings Enabled

APN:

APN Authentication Enabled

Username for APN: cmnet

Password for APN:

Notes: Please check with local service provider about APN username